



# Anguilla Government Statistics Department

## ANGUILLA'S CONSUMER PRICE INDEX

2<sup>nd</sup> Quarter: April – June 2026

Inflation  
Rate

2.1%

### OVERVIEW

Anguilla's Consumer Price Index (AXACPI) shows the rate at which prices of a basket of consumption goods and services change over a period of time for households in Anguilla.

The AXACPI series referenced March 2010=100.0 for the second quarter of 2026 (April - June), showed that consumers paid 'overall' 2.1% more for the basket of goods and services this period compared to the previous quarter (January - March 2026).

The 'Transport' category, which is assigned the second highest weight in the basket, registered the largest percentage increase, amongst the six advancing categories this quarter.

The change from the same quarter over the previous year (2<sup>nd</sup> Qtr 2026/2025) shows that consumers paid 0.3% more for the basket of goods and services. The 'All Items' for June (2<sup>nd</sup> Qtr) 2026 stood at 119.40 from 119.05 for June 2025.

This change was influenced by the upward pressure on prices, within categories such as 'Transport', 'Housing, water, electricity, gas, and other fuel' and 'Food and Non-Alcoholic Beverages', which experienced the largest percentage increases amongst six categories that recorded annual increases.

The compilation of the AXACPI involves the collection and processing of several hundred quoted prices. The new series 2010 as referenced is a revision of the old series referenced 2001, which is necessary to take into account the change in people's taste and for the introduction of new items on the market over the elapsed time between 2001 and now.

**Table 1: Consumer Price Index by Category and Weights**

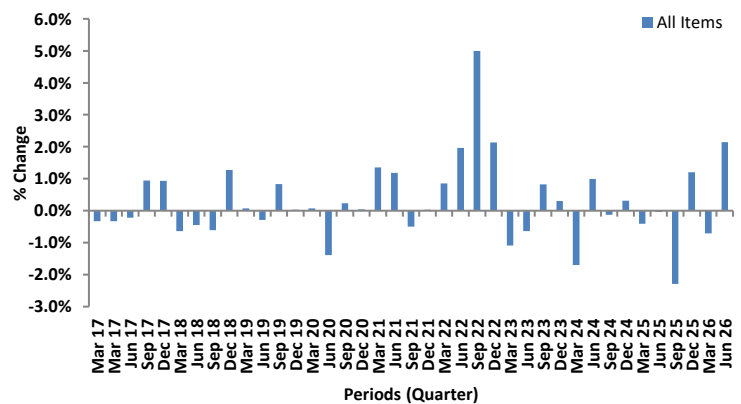
COICOP	Category	Weights	Jun 25	Mar 25	Jun 26	Jun 26/ Mar 26	Jun 26/ Jun 25
11.01	FOOD AND NON-ALCOHOLIC BEVERAGES	128.3	138.56	140.23	140.89	0.5%	1.7%
11.02	ALCOHOLIC BEVERAGES, TOBACCO	23.4	162.22	147.28	147.89	0.4%	-8.8%
11.03	CLOTHING AND FOOTWEAR	32.5	124.16	117.24	124.87	6.5%	0.6%
11.04	HOUSING, WATER, ELECTRICITY, GAS, AND OTHER FUELS	255.5	103.06	102.71	105.14	2.4%	2.0%
11.05	FURNISHING, HOUSEHOLD EQUIPMENT AND ROUTINE HOUSEHOLD MAINTENANCE	40.3	129.69	120.57	117.30	-2.7%	-9.6%
11.06	HEALTH	23.4	137.72	137.72	137.96	0.2%	0.2%
11.07	TRANSPORT	159.6	103.06	96.23	106.14	10.3%	3.0%
11.08	COMMUNICATION	134.2	126.12	126.12	126.12	0.0%	0.0%
11.09	RECREATION AND CULTURE	38.1	96.47	89.16	88.44	-0.8%	-8.3%
11.10	EDUCATION	59.1	139.92	139.92	139.92	0.0%	0.0%
11.11	RESTAURANTS AND HOTELS	40.4	155.73	161.29	158.09	-2.0%	1.5%
11.12	MISCELLANEOUS GOODS AND SERVICES	65.2	128.15	129.10	127.04	-1.6%	-0.9%
	<b>All Items</b>	<b>1000.0</b>	<b>119.05</b>	<b>116.89</b>	<b>119.40</b>	<b>2.1%</b>	<b>0.3%</b>

### CHANGE FROM PREVIOUS QUARTER

The quarterly inflation for the 2<sup>nd</sup> quarter 2026, stood at 2.1% more from the previous quarter; Jan - Mar 2026. Twelve broad categories make up the AXACPI; six (6) of these categories recorded an increase, four (4) recorded a decrease and two (2) remained unchanged.

The category 'Transport' recorded the largest quarterly increase of 10.3%. This increase was mainly due to the increase in the 'Operations of personal transport equipment' (15.0%) sub-category, specifically due to the increase of 30.8% in the average prices in 'Fuels and lubricants for personal transport equipment'.

The 'Clothing and Footwear' category followed with an increase of 6.5%, which was due to the increase in the average price in the 'Clothing' sub-category which increased by 7.0%. The 'Footwear' category increased by 3.9% over the quarter.



**Figure 1: All Items Quarterly change March 2017 to June 2026 (March 2010=100)**

The 'Housing, water, electricity, gas and other fuel' category followed with an increase of 2.4% over the previous quarter.

This was due to the increase in the average prices in the ‘Electricity, gas and other fuels’ subcategory, specifically due to increase in the average price of electricity. The Government of Anguilla “implemented targeted measures to mitigate the impact of global oil market volatility by capping the fuel surcharge for electricity consumed in April and May.” As a result, domestic customers were not charged the increase in the fuel surcharge during this period. However, the fuel surcharge increased to XCD 1.04 per kWh of electricity for June 2026.

The ‘Food and non-alcoholic beverages’ category experienced an increase of 0.5%, this was due to the increase in several food sub-categories such as ‘Oil and fats’ (12.4%), ‘Fruits’ (3.5%), ‘Meats’ (1.0%) and ‘Mineral water, soft drinks, fruit and vegetable juices’ (0.5%).

The ‘Alcoholic Beverages and Tobacco’ and ‘Health’ categories recorded increase of 0.4% and 0.2% respectively, due to the increase in Alcohol Beverages (0.4%) and ‘Medical products appliances and equipment’ (0.5%).

For the period under review, the categories, ‘Communication’

and ‘Education’, both remained unchanged when compared to the previous quarter.

The ‘Furnishing, household equipment and routine household maintenance’ category recorded the largest quarterly decline of 2.7%. This decrease was due to the decline in the average prices of ‘Furniture and furnishings’ (-9.0%), ‘Household textiles’ (-3.8%), ‘Tools and equipment for house and garden’ (-2.4%), ‘Goods and services for routine household maintenance’ (-1.1%), amongst others.

The ‘Restaurant and Accommodation’ category decreased by 2.0% over the previous quarter, this was due to the decrease in the average prices for accommodation services.

The ‘Miscellaneous Goods and Services’, category recorded a decreased of 1.6%, due to the decrease in average prices in the sub-categories; ‘Personal Care’ (-4.4%) and ‘Personal Effects’ (-1.6%).

The ‘Recreation and Culture’ category; recording a decrease of 0.8% over the previous quarter. This decrease was due to the declines in the sub-categories ‘Audio-visual photographic and information processing equipment’ (-0.8%) and ‘Other recreational items and equipment, garden and pets’ (-2.1%).

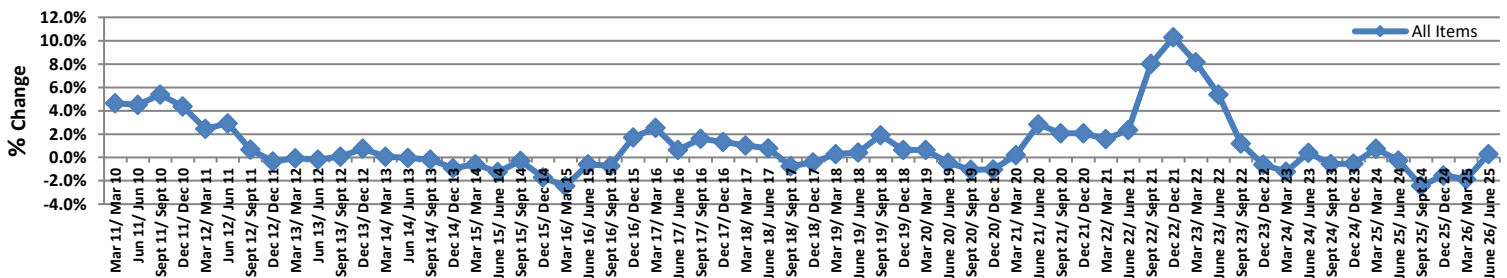


Figure 2: Percentage change from the same quarter of the previous year  
March 2010 – June 2026

### CHANGE FROM SAME QUARTER OF PREVIOUS YEAR

The annual change for this quarter over the previous year (2<sup>nd</sup> quarter 2026/2025), shows that the ‘All Items’ index decreased by 0.3%. Within the twelve (12) AXACPI categories, there were six (6) increases, four (4) decreases and two (2) remained unchanged.

The ‘Transport’ category recorded the largest increase with 3.0% in the 2<sup>nd</sup> quarter compared to its corresponding 2<sup>nd</sup> quarter 2025. This was mainly due to the increase in the ‘Operation of personal Transport equipment’ subcategory which increased by 10.3%. Specifically, the ‘Fuels and lubricant for personal transport equipment’ recorded an increase of 22.4%, due to the increase in the average fuel prices.

The ‘Housing, Water, Electricity, Gas and Other fuels’ category showed an increase of 2.0% over the same period last year, due to the increase in the average prices in the ‘Electricity, Gas and other fuels’ (14.1%), specifically due to the increase in ‘Electricity’ due to the increase in the fuel surcharge per kWh of electricity.

The ‘Food and Non-Alcoholic Beverages’ category, showed an annual increase of 1.7% which was due to the increase in most of the food sub-categories such as, ‘Bread and cereals’ (4.1%), ‘Oil and Fat’ (6.7%), and ‘Mineral water, soft drinks, fruit and vegetable juices’ (16.4%), amongst others.

‘Restaurants and hotels’ category increased by 1.5%, this was due to the increase in both restaurant and accommodation services.

The categories ‘Clothing and footwear’ and ‘Health’ both recorded increases of 0.6% and 0.2% respectively.

The ‘Communication’ and ‘Education’ categories remained unchanged over the 2<sup>nd</sup> quarter 2025 prices.

The ‘Furnishing, Household equipment and routine Household maintenance’ category recorded a decrease of 9.6%, in which majority of the subcategories received declines, the highest, ‘Household appliance’ (-19.9%).

‘Alcoholic Beverage and Tobacco’ prices decline by 8.8%, this was due to the reduction in prices of both sub-categories ‘Alcoholic Beverages’ (-9.0%) and ‘Tobacco’ (-2.9%).

The ‘Recreational and Culture’ category followed with a decline of 8.3%. This was due to the decrease in the sub-categories ‘Audio-visual, photographic and information processing equipment’ (-4.1%) and ‘Other recreational items and equipment, gardens and pets’ (-21.5%).

The ‘Miscellaneous Goods and Service’ category decreased by 0.9%, which was due to the decrease in the average prices in the ‘Personal Care’ (-2.6%) sub-categories over this same period last year.

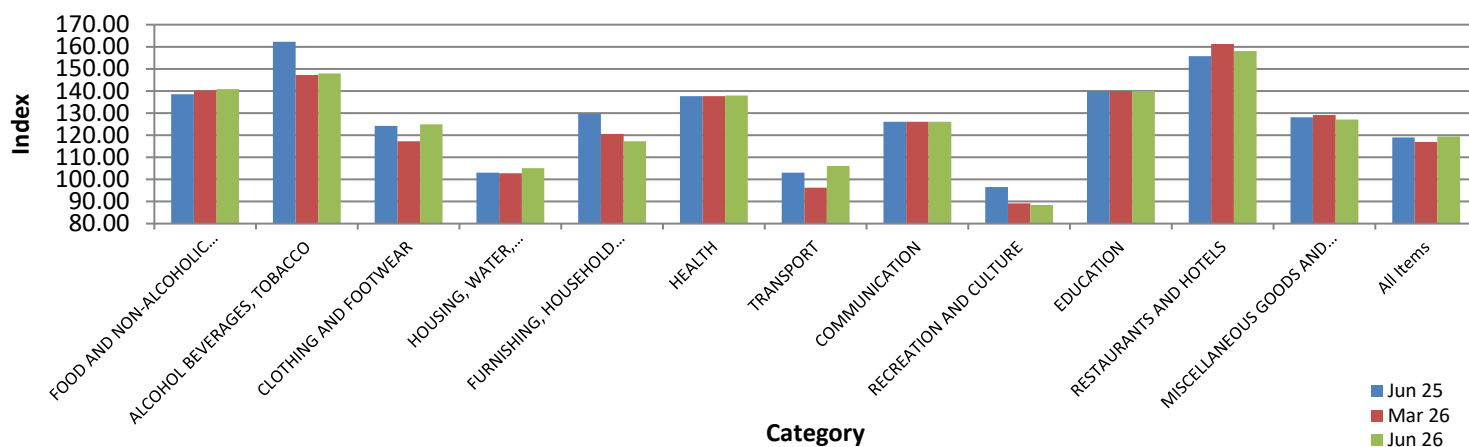


Figure 3: Consumer Price Index by category  
(June 2025, March 2026 and June 2026)

## CALENDAR YEAR ANNUAL ANALYSIS

The calendar year (average index for the year) analysis shows that on average, throughout 2025, consumers paid 0.9% less for goods and services in comparison to 2024, with six (6) categories experiencing decreases throughout the year and six (6) increases. The ‘Alcohol Beverage and Tobacco’ category, in percentage terms, impacted the index greatest this calendar year with a 5.0% decrease, followed by the categories ‘Food and Non-alcoholic beverage’, ‘Transport’, ‘Recreation & Culture’, Misc. Goods and Services’ and ‘Household, water, electricity, Gas and other fuels’ with 4.9%, 3.6%, 2.8%, 1.6% and 1.6% respectively. The largest percentage increase which positively impacted the overall calendar year index was observed by the category ‘Restaurants and Hotels’ with an increase of 8.3%, followed by ‘Clothing & Footwear’ with 6.1%.

### Calendar year percentage change (%)

Code Description	2012	2013	2014	2015	2016	2017	2018	2019	2020	2021	2022	2023	2024	2025
11.01 FOOD AND NON-ALCOHOLIC BEVERAGES	2.7	1.7	1.7	-0.6	-0.3	1.2	0.9	2.3	0.5	3.2	10.9	8.6	2.3	-4.9
11.02 ALCOHOL BEVERAGES, TOBACCO	1.2	3.8	0.9	-0.1	0.8	2.1	0.5	3.1	1.5	-1.4	10.2	14.7	0.9	-5.0
11.03 CLOTHING AND FOOTWEAR	6.4	4.2	-4.6	-4.1	4.0	-4.5	3.1	2.9	-2.2	-2.2	6.1	0.3	0.7	6.1
HOUSING, WATER, ELECTRICITY, GAS, AND OTHER FUELS														
11.04 FUELS	-0.2	-1.9	-0.2	-1.3	-1.8	-0.7	-0.2	-0.01	-2.5	3.0	6.8	2.8	-0.3	-1.6
11.05 FURNISHING, HOUSEHOLD EQUIPMENT AND ROUTINE HOUSEHOLD MAINTENANCE	2.1	0.1	-2.1	-1.0	4.4	0.5	1.3	-1.1	-1.5	-1.1	7.1	5.0	-1.3	2.7
11.06 HEALTH	2.8	7.6	2.6	2.9	-2.2	1.5	-0.1	0.5	-0.6	6.9	6.0	3.2	0.2	2.1
11.07 TRANSPORT	4.9	0.2	-1.8	-2.7	-9.0	5.5	1.7	0.9	-1.3	0.3	3.1	0.2	-10.1	-3.6
11.08 COMMUNICATION	-2.4	0.2	-0.7	0.3	9.8	3.6	-1.4	3.3	0.3	2.9	0.5	-1.1	-0.2	2.0
11.09 RECREATION AND CULTURE	1.9	-1.5	-1.8	-1.7	-2.1	1.6	-5.1	-5.3	0.8	2.4	4.2	2.4	1.7	-2.8
11.10 EDUCATION	0.6	0.1	0.0	0.0	0.0	0.0	0.0	0.8	0.0	0.0	2.5	3.3	4.5	2.9
11.11 RESTAURANTS AND HOTELS	0.6	2.6	3.2	0.7	-0.3	1.6	0.5	1.4	5.3	1.3	8.7	4.3	10.8	8.3
11.12 MISCELLANEOUS GOODS AND SERVICES	2.1	-1.0	0.9	-0.1	1.0	0.9	0.9	-1.6	2.2	1.0	5.6	10.1	4.9	-1.6
All Items	1.4	0.1	-0.26	-1.0	-0.5	1.5	0.2	0.8	-0.5	1.8	5.6	3.4	-0.5	-0.9

## COMPUTING INDEX CHANGE

Quarter-to-Quarter index change, the percentage change from the previous quarter (2<sup>nd</sup> Quarter and 1<sup>st</sup> Quarter, 2015) is calculated:

$$\frac{Q1\ 2016\ index - Q4\ 2015\ index}{Q4\ 2015\ index} \times 100$$

$$\frac{103.97 - 105.15}{105.15} \times 100$$

= -1.1%

Quarter-to-Quarter annual index change, for the same quarter of previous year, 1<sup>st</sup> Quarter 2015 and 1<sup>st</sup> Quarter, 2014 is calculated:

$$\frac{Q1\ 2016\ index - Q1\ 2015\ index}{Q1\ 2015\ index} \times 100$$

$$\frac{103.97 - 106.60}{106.60} \times 100$$

= -2.5%

Calendar year index change between the arithmetic average of the quarterly indexes of one year to the previous year, 2015 and 2014 is calculated:

$$\frac{Avg.\ year\ 2015\ index - Avg.\ year\ 2014\ index}{Avg.\ year\ 2014\ index}$$

$$\times 100 = \frac{106.11 - 107.16}{107.16} \times 100$$

= -1.0

## HISTORICAL DATA

All Items	FOOD AND NON-ALCOHOLIC BEVERAGES	ALCOHOL BEVERAGES, TOBACCO	CLOTHING AND FOOTWEAR	HOUSING, WATER, ELECTRICITY, GAS, AND OTHER FUELS	FURNISHING, HOUSEHOLD EQUIPMENT AND ROUTINE HOUSEHOLD MAINTENANCE	HEALTH	TRANSPORT	COMMUNICATION	RECREATION AND CULTURE	EDUCATION	RESTAURANTS AND HOTELS	MISC. GOODS AND SERVICES	
<b>CHANGE FROM QUARTERLY ANALYSIS</b>													
<b>2020</b>													
1 <sup>st</sup> Qtr	0.1	0.9	0.1	0.1	-0.8	0.3	-0.3	-0.8	-0.5	1.4	0.0	4.8	1.5
2 <sup>nd</sup> Qtr	-1.4	1.8	1.3	-3.6	-2.4	0.1	0.0	-5.3	0.0	-1.6	0.0	-1.0	0.8
3 <sup>rd</sup> Qtr	0.2	-1.5	0.3	0.4	0.6	-1.8	0.0	1.7	0.0	0.0	0.0	-0.3	1.1
4 <sup>th</sup> Qtr	0.04	-1.2	-4.5	-2.3	0.3	-0.4	-1.6	-1.6	3.5	0.2	0.0	1.6	1.3
<b>2021</b>													
1 <sup>st</sup> Qtr	1.3	2.9	0.6	0.7	1.0	0.4	7.9	2.8	0.0	0.2	0.0	-0.5	1.0
2 <sup>nd</sup> Qtr	1.2	-0.3	0.7	-0.2	0.1	0.5	1.3	7.1	0.1	0.5	0.0	-0.3	0.1
3 <sup>rd</sup> Qtr	-0.5	2.5	0.0	-0.6	3.7	-2.3	-1.3	-9.7	0.0	1.4	0.0	2.4	-1.9
4 <sup>th</sup> Qtr	0.03	2.0	1.7	0.0	0.7	1.7	-0.2	-3.5	0.8	5.5	0.0	0.2	-3.5
<b>2022</b>													
1 <sup>st</sup> Qtr	0.9	0.8	0.7	1.9	0.4	0.4	5.0	0.5	0.0	0.1	0.0	4.5	2.8
2 <sup>nd</sup> Qtr	2.0	2.4	2.3	0.0	1.1	1.7	0.3	7.8	0.1	-1.0	0.0	1.5	-0.3
3 <sup>rd</sup> Qtr	5.0	9.3	9.6	7.9	6.1	8.6	0.8	1.4	-0.5	-0.2	5.1	2.7	14.2
4 <sup>th</sup> Qtr	2.1	2.1	4.7	2.1	0.1	2.6	3.4	9.5	0.3	0.0	0.0	1.1	-1.2
<b>2023</b>													
1 <sup>st</sup> Qtr	-1.1	0.2	2.3	-2.9	0.1	0.6	0.2	-7.8	-1.1	3.5	0.0	2.7	1.1
2 <sup>nd</sup> Qtr	-0.6	0.4	0.9	-0.9	0.2	-0.3	-0.3	9.3	0.1	1.7	0.0	5.7	-0.1
3 <sup>rd</sup> Qtr	0.8	1.6	-0.8	-0.4	1.0	-0.4	0.1	1.2	0.0	0.0	0.0	-0.4	3.7
4 <sup>th</sup> Qtr	0.3	2.4	0.0	-0.6	0.1	0.9	0.0	-3.8	-2.0	1.9	3.1	1.8	4.4
<b>2024</b>													
1 <sup>st</sup> Qtr	-1.7	-0.2	0.0	1.2	0.0	-0.8	0.0	-10.6	0.1	0.0	0.7	0.4	0.7
2 <sup>nd</sup> Qtr	1.0	-0.3	0.0	-0.6	0.1	-1.8	0.1	7.2	0.0	0.0	0.7	0.5	-1.3
3 <sup>rd</sup> Qtr	-0.1	-0.5	0.1	-0.3	-0.2	3.3	0.1	-5.5	-0.3	2.3	1.8	18.4	-1.1
4 <sup>th</sup> Qtr	0.3	1.4	0.2	4.9	-1.6	-1.9	0.0	2.4	0.0	-1.6	0.0	0.1	2.2
<b>2025</b>													
1 <sup>st</sup> Qtr	-0.4	-2.5	-0.3	5.7	0.0	1.7	2.4	-3.1	0.0	1.4	1.8	1.0	-1.0
2 <sup>nd</sup> Qtr	-0.04	-5.6	-0.2	0.9	-0.1	4.0	-0.5	1.8	2.8	1.3	0.0	-2.1	-0.8
3 <sup>rd</sup> Qtr	-2.3	2.8	-9.6	-8.7	-0.5	-3.1	0.0	-8.8	0.0	-7.2	0.0	-0.2	2.1
4 <sup>th</sup> Qtr	1.2	-1.3	0.2	3.8	0.0	-0.5	0.0	8.7	0.0	-6.3	0.0	1.4	1.7
<b>2026</b>													
1 <sup>st</sup> Qtr	-0.7	-0.3	0.3	-0.4	0.2	-3.6	0.0	-5.8	0.0	6.2	0.00	2.3	1.3
<b>CHANGE FROM SAME QUARTER OF PREVIOUS YEAR</b>													
2 <sup>nd</sup> Qtr 20/19	-0.5	2.0	3.8	-2.2	-3.2	-1.4	-0.2	-0.7	-0.6	0.0	0.0	5.8	2.1
2 <sup>nd</sup> Qtr 21/20	2.8	-0.1	-2.9	-1.5	2.0	-1.3	7.5	10.2	3.6	0.9	0.0	0.	3.6
2 <sup>nd</sup> Qtr 22/21	2.4	8.0	4.7	1.2	6.0	1.5	3.8	-5.7	0.9	6.1	0.0	8.8	-2.9
2 <sup>nd</sup> Qtr 23/22	5.4	12.2	22.9	4.6	4.8	9.0	4.3	1.6	-1.2	1.7	5.1	4.9	14.2
2 <sup>nd</sup> Qtr 24/23	0.4	3.5	-0.7	-0.3	1.1	-2.1	0.2	-6.6	-0.1	1.9	4.5	2.2	7.7
2 <sup>nd</sup> Qtr 25/24	-0.3	-7.2	-0.2	11.5	-1.9	7.1	2.0	-4.6	2.5	3.4	3.7	17.2	-0.9

This report along with similar reports for CPI, are available at the Government of Anguilla Statistics Department's website: <http://statistics.gov.ai>

ANGUILLA STATISTICS DEPARTMENT  
 OLD COURT HOUSE BUILDING  
 P.O. BOX 60  
 THE VALLEY, ANGUILLA  
 BRITISH WEST INDIES  
 Telephone: 1-264-497-5731  
 Fax: 1-264-497-3986  
 Email: [statistics@gov.ai](mailto:statistics@gov.ai)

'Sound Statistics for Sustainable Development'